

Why use TGM?

Successful grazing managers know that most of their family and business goals - including those for livestock and wildlife - ultimately depend on the health of their rangelands. Science and experience show that grazing land health, and livestock and wildlife production, are closely related to forage utilization.

TGM helps you optimize grazing plans and stocking rates to achieve your livestock and landscape goals. TGM will help you:

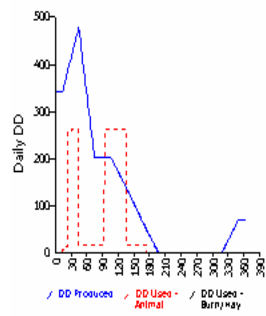
1. target levels of forage utilization.
2. plan and monitor stocking rates and grazing schedules to meet targets for utilization.
3. align periods of high livestock demand (gain) with periods of best forage production.
4. provide early warning of forage shortages while many options are still available.
5. observe pasture utilization levels to make sure TGM is properly adjusted to your "eye" and experience.

What will TGM do for me?

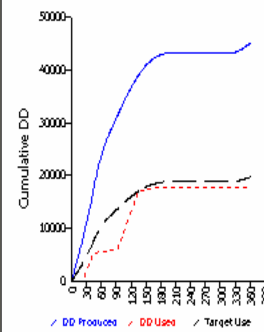
TGM graphs the relationships between available forage, the targeted level of use, and the planned (or actual) level of use. Individual pastures, groups of pastures, or the whole ranch can be graphed.

The most effective responses to drought are usually those made early. TGM can give you that "heads up" for early action.

Daily Forage Balance - Coyote & Elk & Grizzly (Forage year 2006)

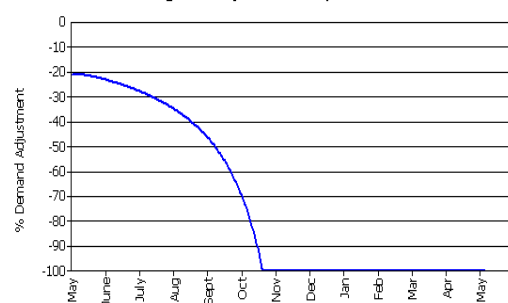


Cumulative Forage Balance - Coyote & Elk & Grizzly (Forage year 2006)



The graph below shows % stocking rate that must be reduced on any date to meet animal performance goals.

Stocking Rate Adjustment Graph - Whole Ranch



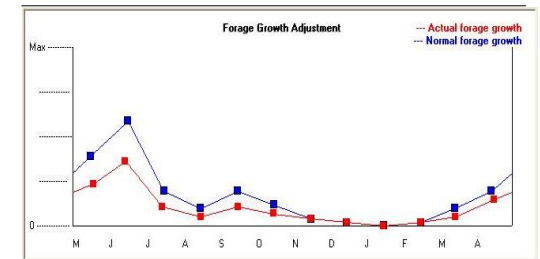
What do I put into TGM?

Tables are used to help you input and track herd inventory and grazing schedules.

Kind / Class	Number	Date In	Weight In	Date Out	Weight Out	Demand Days
CALVES	170	5/1/2006	200	11/1/2006	500	20609
COWS	170	5/1/2006	1000	12/1/2006	1100	27786
BULLS	7	6/1/2006	1400	9/30/2006	1300	516
COWS	160	12/2/2006	1100	4/30/2007	1000	12079
CALVES	152	4/1/2007	175	4/30/2007	215	2225
CALVES	18	4/1/2007	150	4/30/2007	175	189
COWS	24	4/1/2007	850	4/30/2007	900	683

Your in-field observations keep TGM current and help you gain confidence in TGM's projections. Ongoing monitoring includes:

1. Forage Growth
2. Pasture Utilization
3. Livestock Weights and Condition



When growing conditions vary from "normal", you will adjust the interactive graph shown above.